

# Eva 32 Laser Cutter

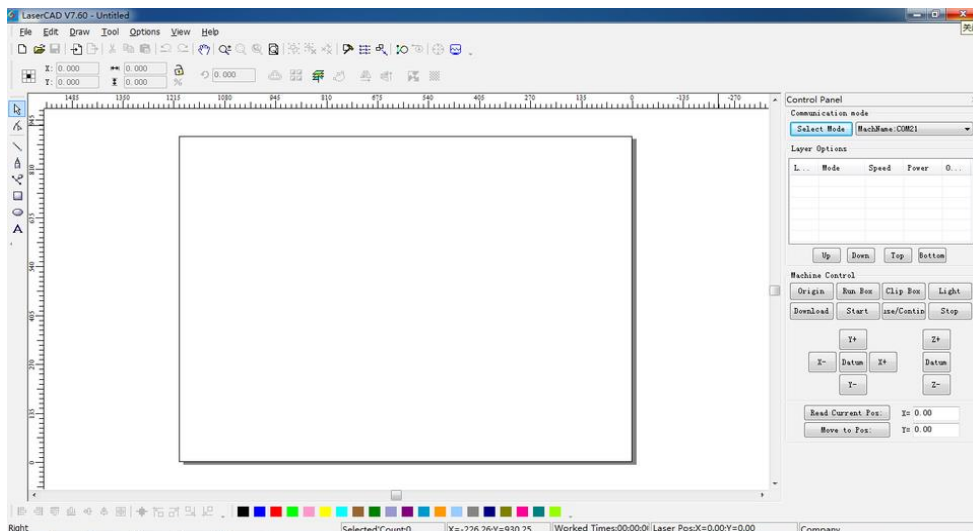
Laser cutting is a non-contact process that uses a laser to cut the material accurately. The 2D design that we design can be cut or engraved in the material we choose

[Laser cutting](#)

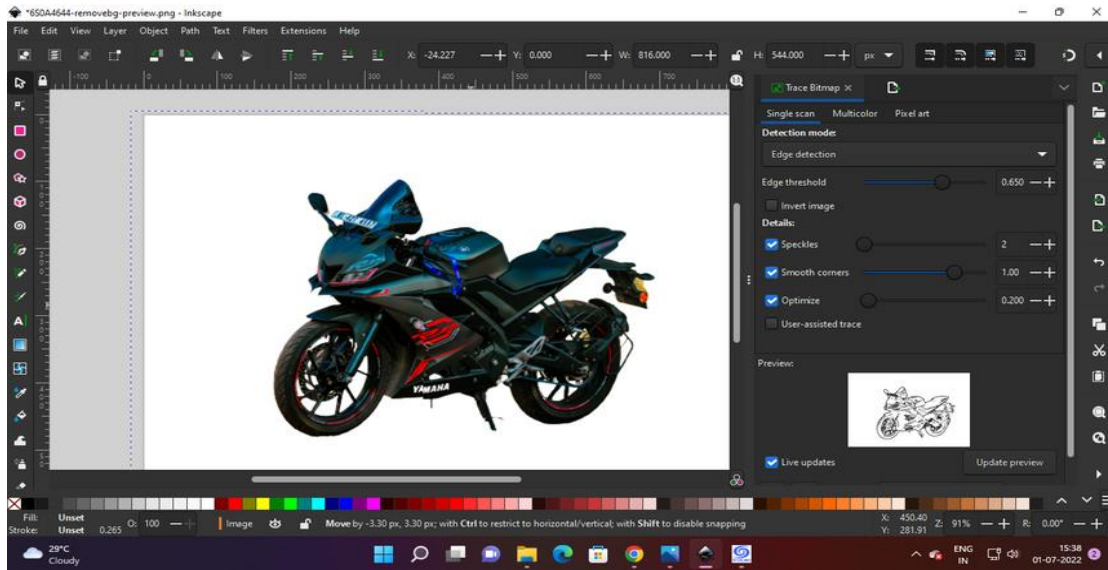
[Laser engraving](#)



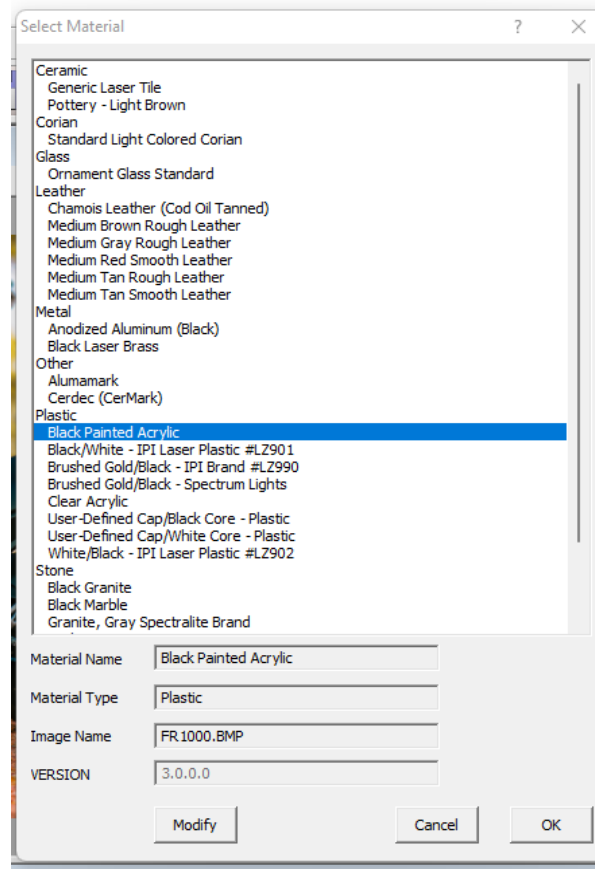
## Interface of laser cad software



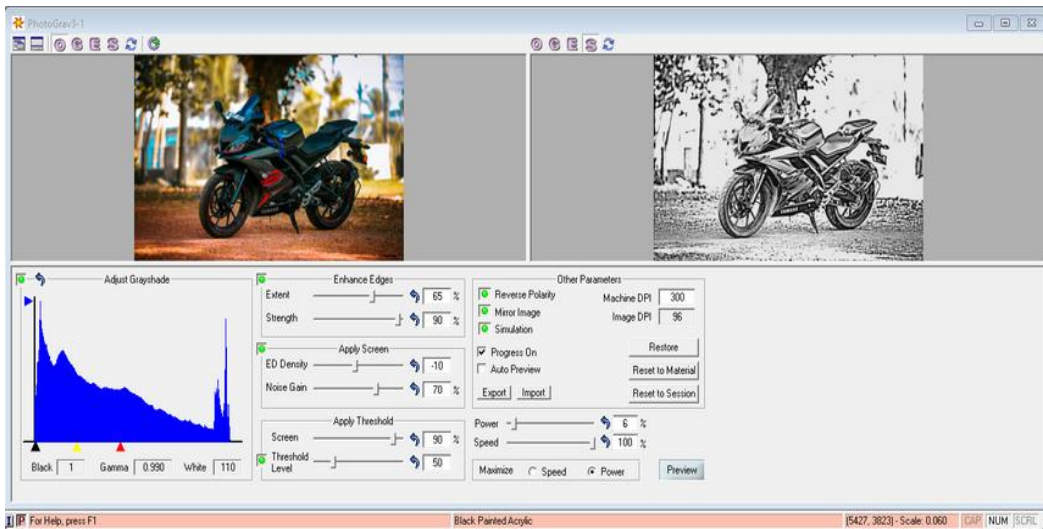
## Converted the jpg to svg using Inkscape



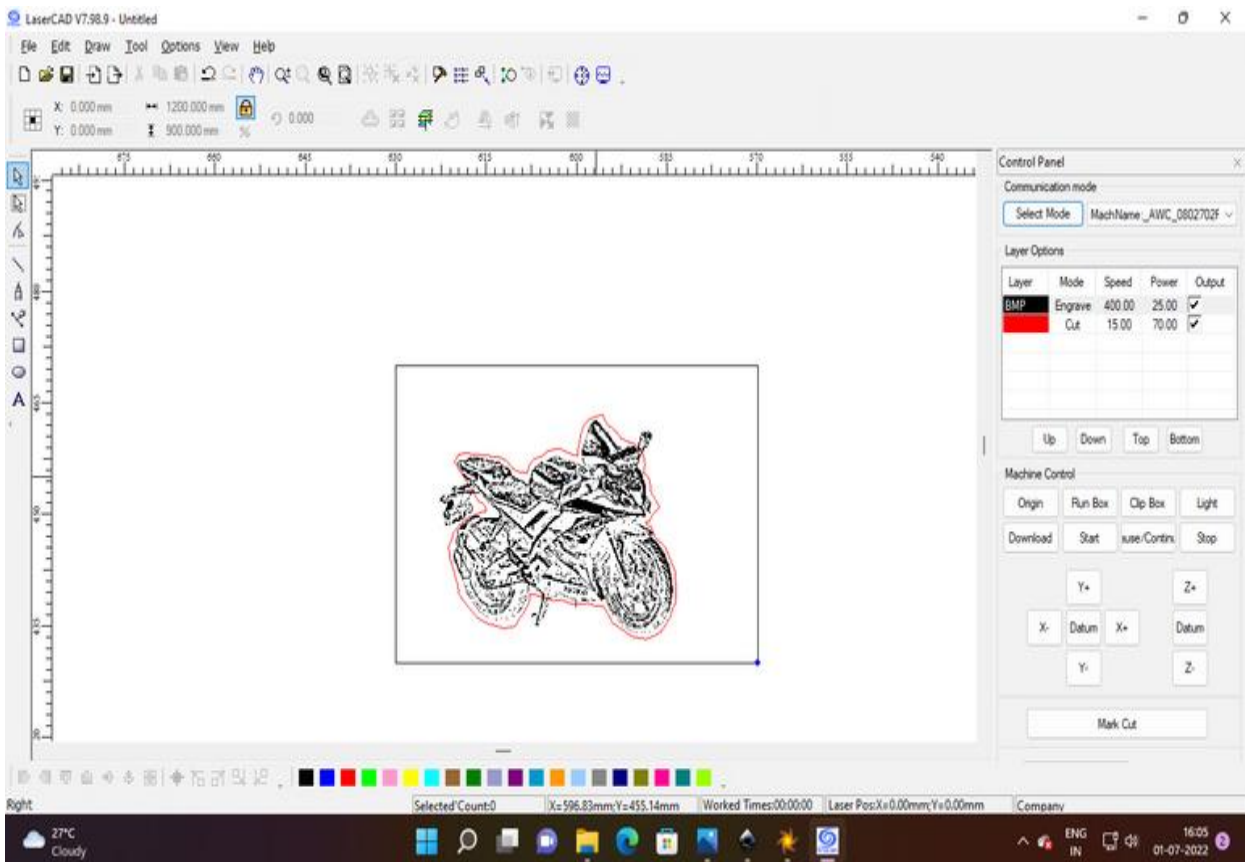
## Selected the black acrylic material of 3 mm



## Using photo grave software traced the sketches



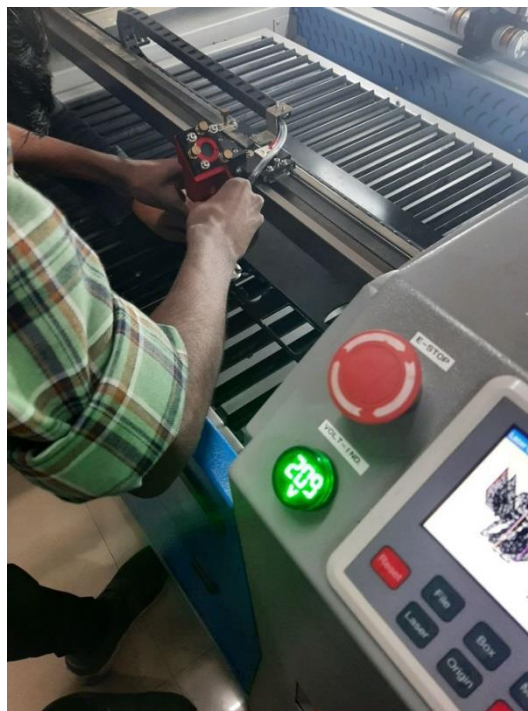
## Imported to laser cad software and set the parameters for different color (cut lines and engraving)



## Various parameters for 3 mm acrylic

	speed	power
cut	15cm/sec	70%
engrave	400cm/sec	20%

## Manual Adjusting of Focus



## Result

